

Academic Center Entrance Exam Curriculum Syllabus (by session, 1–6)

Session 1

Diagnostic Test

Overview

- Overview of the Academic Center Entrance Exam

Vocabulary

1. Common Prefixes and Roots
2. Test Prep Chicago Vocabulary Strategy

Session 2

Verbal Classifications

1. Review of Different Types of Questions
2. TPC Verbal Classification Strategy
3. Practice Questions

Sentence Completions

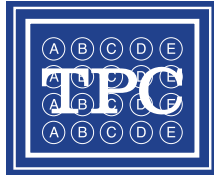
1. TPC Sentence Completion Strategy
2. Practice Questions

Number Series

1. Review of Number Series Patterns
2. TPC Number Series Strategy
3. Practice Questions

Figural Series

1. Shape Review
2. TPC Figural Series Strategy
3. Review of Different Figural Series Relationships
4. Practice Questions



Academic Center Entrance Exam Curriculum Syllabus (by session, 1–6)

Session 3

Paper Folding

1. Explanation of Paper Folding Questions
2. TPC Paper Folding Strategy
3. Axis/Lines of Symmetry Practice
4. Practice Questions

Figural Analogies

1. TPC Figural Analogy Strategy
2. Review of Different Figural Analogy Relationships
3. Practice Questions

Verbal Analogies

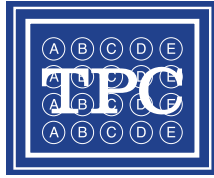
1. TPC Verbal Analogy Strategy
2. Review of Different Verbal Analogy Relationships
3. Practice Questions

Sentence Arrangements

1. Explanation of Sentence Arrangement Questions
2. TPC Sentence Arrangement Strategy
3. Practice Questions

Number Puzzles

1. Explanation of Number Puzzles Questions
2. TPC Number Puzzles Strategy (1 Variable)
3. TPC Number Puzzles Strategy (2 Variables)
4. Practice Questions



Academic Center Entrance Exam Curriculum Syllabus (by session, 1–6)

Session 4

Word/Letter Matrix

1. Explanation of Word/Letter Matrix Questions
2. TPC Word/Letter Matrix Strategy
3. Review of Different Word/Letter Matrix Relationships
4. Practice Questions

Verbal Classifications

1. TPC Verbal Classification Strategy (Review)
2. Practice Questions

Number Matrix

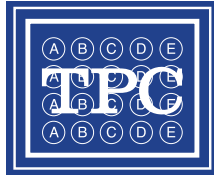
1. Explanation of Number Matrix Questions
2. TPC Number Matrix Strategy
3. Review of Different Number Matrix Relationships
4. Practice Questions

Figural Matrix

1. Explanation of Figural Matrix Questions
2. Review of Different Figural Matrix Relationships
3. TPC Figural Matrix Strategy
4. Practice Questions

Figural Series

1. TPC Figural Series Strategy (Review)
2. Practice Questions



Academic Center Entrance Exam Curriculum Syllabus (by session, 1–6)

Session 5

Sentence Completions

1. TPC Sentence Completion Strategy (Review)
2. Practice Questions

Sentence Arrangements

1. TPC Sentence Arrangement Strategy (Review)
2. Practice Questions

Verbal Analogies

1. TPC Verbal Analogy Strategy (Review)
2. Practice Questions

Number Series

1. TPC Number Series Strategy (Review)
2. Practice Questions

Figural Analogies

1. TPC Figural Analogy Strategy (Review)
2. Practice Questions

Paper Folding

1. TPC Paper Folding Strategy (Review)
2. Practice Questions

Session 6

Final Test

Test Prep Chicago Final Test-Taking Tips

Additional Notes:

Students will complete weekly homework assignments which will be turned in and graded by their course instructor. Parents will receive weekly personalized email reports with an overview of the topics covered in class as well as their child's results from the previous week's homework assignment.